

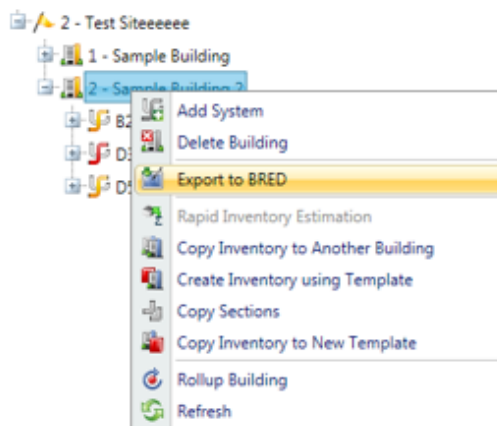


## Linking Images in BRED

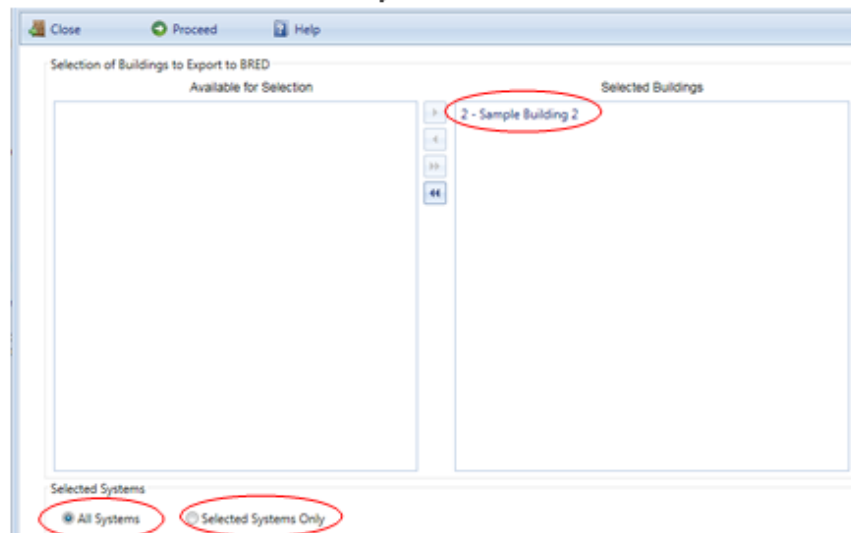
Paul Paisley - 2020-08-28 - [Comments \(0\)](#) - [BUILDER Remote Entry Database \(BRED\)](#)

### **BUILDER TO BRED 3.3 Image Linking Process**

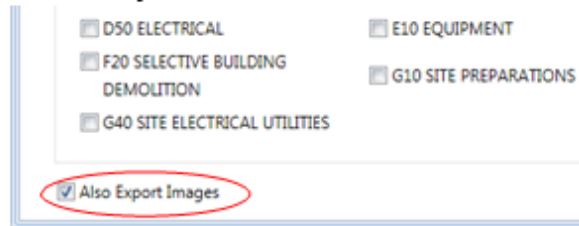
- ❖ Exporting BRED file with images
  - Right Click the building node on the Navigation Tree in BUILDER
  - Select the “Export to BRED” option



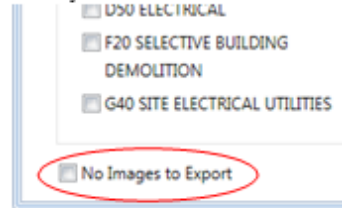
- Be sure the correct Building is selected and chose either “All Systems” or select specific systems



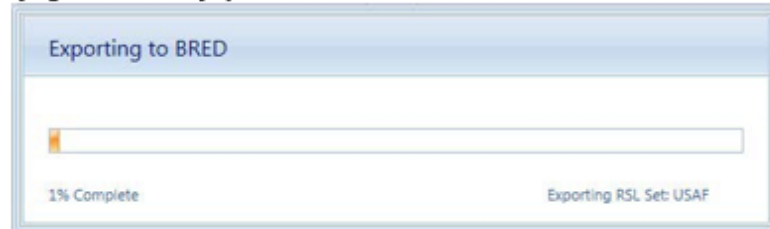
- In order to download images with the BRED file user must select "Also Export Images" at the bottom of BRED Exporter Window



- If you see the following text it means that the building(s) you have selected to export does not have any images currently



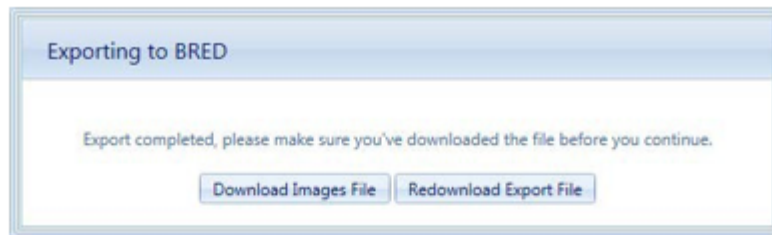
- Select the "Proceed" button to start the export
- A progress bar will display as the BRED file is downloaded first



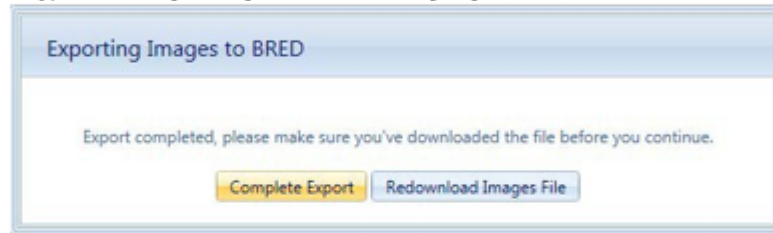
- After a successful download select the "Save As" option to choose the file location of the BRED file



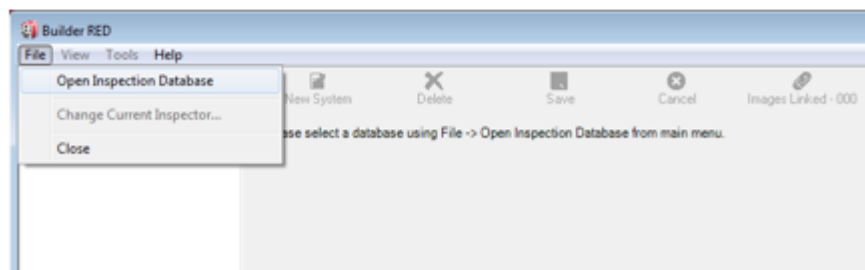
- If the BRED file did not download correctly select "Redownload Export File" otherwise select "Download Images File" to start the second download



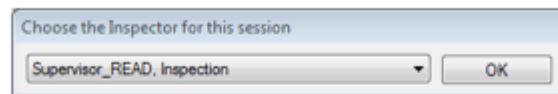
- After the second download completes click “Save As” and choose the same file location as your BRED file
- Lastly, select “Complete Export” to finish the export process



- ❖ Exporting BRED file **WITHOUT** Images
  - It is very important to understand that you can still add and import photos into BUILDER through BRED without downloading the images from BUILDER
  - Some buildings within your site can already contain several hundred photos
  - If the user knows beforehand that they will not need to view or edit existing photos from the BUILDER site in BRED the best practice is to just download the BRED file without images
  - Run through the same BRED export process outlined previous and ignore the “Also Export Images” checkbox
- ❖ Opening BRED file
  - Once the BRED software has finished loading select File -> Open Inspection Database

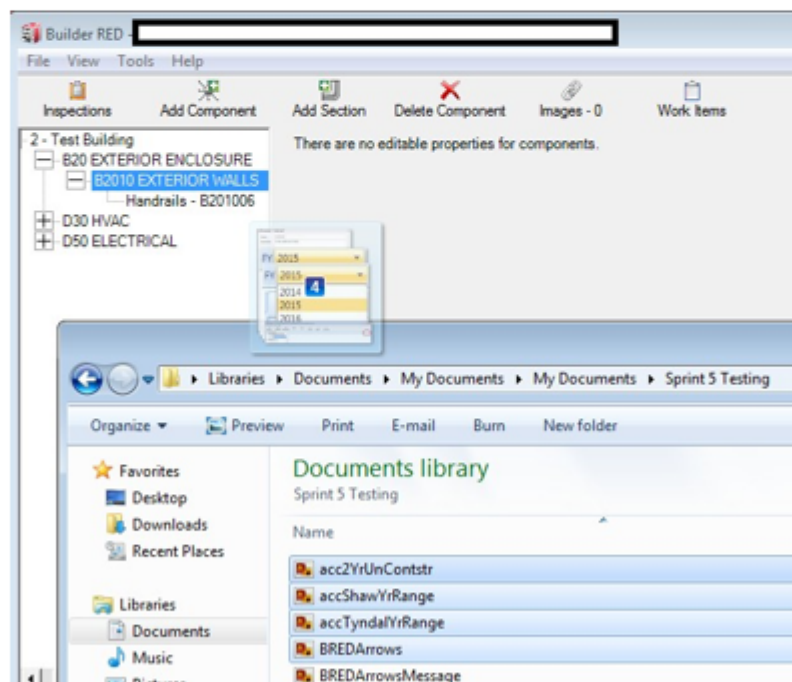


- Locate the BRED file that was previously downloaded and click “Open”
- User is then prompted to select their name from the Inspector Drop Down List
- If user cannot find their name on the list contact BUILDER Support ([smssupport@erdc.dren.mil](mailto:smssupport@erdc.dren.mil))

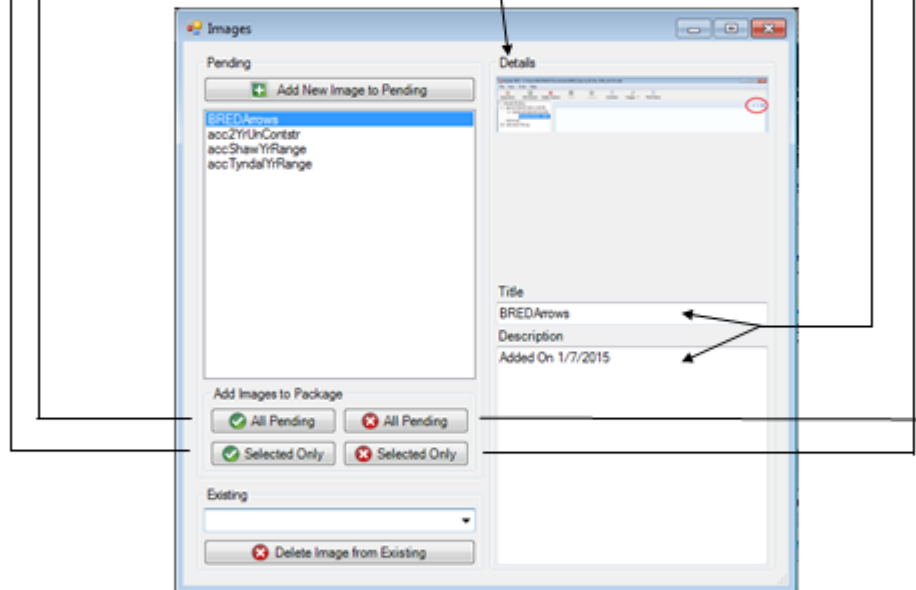


#### ❖ Adding Images

- Drag and Drop Method
  - Be sure to select the correct node on the Navigator tree that you would like to add images to
  - Select the images you would like to add and then drag them onto the BRED window

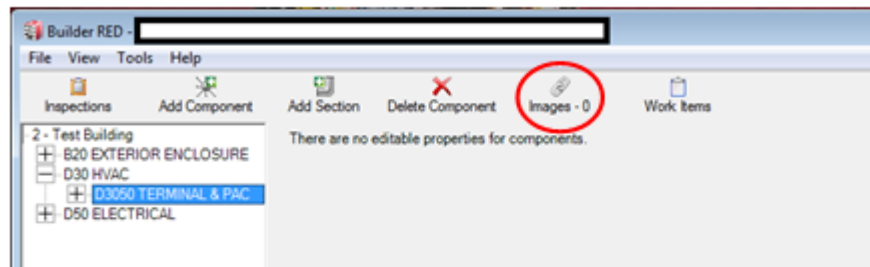


- After dropping images into BRED an import screen will pop up
- Clicking the green checkmark "All Pending" button all images in the pending list will be added
- Clicking the green checkmark "Selected Only" button will import only the selected image in the pending list
- Clicking the red "All Pending" button all images in the pending list will be cleared out
- Clicking the red "Selected Only" button will clear only the selected image from the pending list
- User can make edits to the Title and Description fields before the import of the specific image
- Details view offers a preview of the selected image

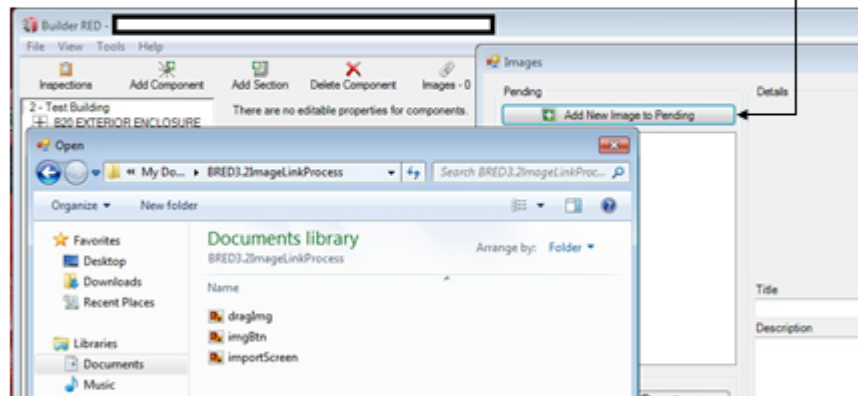


➤ Manual Search Method

- Navigate to the desired node on the Navigation Tree
- Click the "Images" Button on the main toolbar which opens the import screen

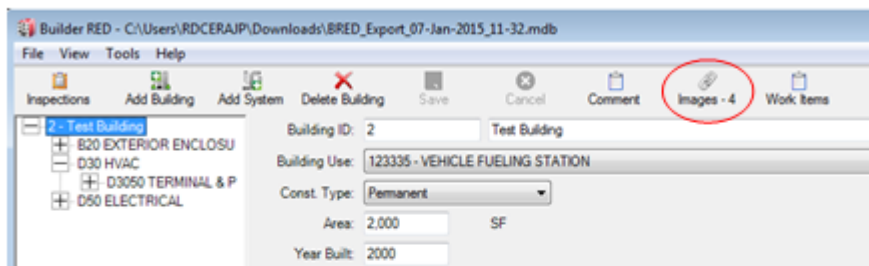


- Select "Add New Image to Pending" to manually browse for images

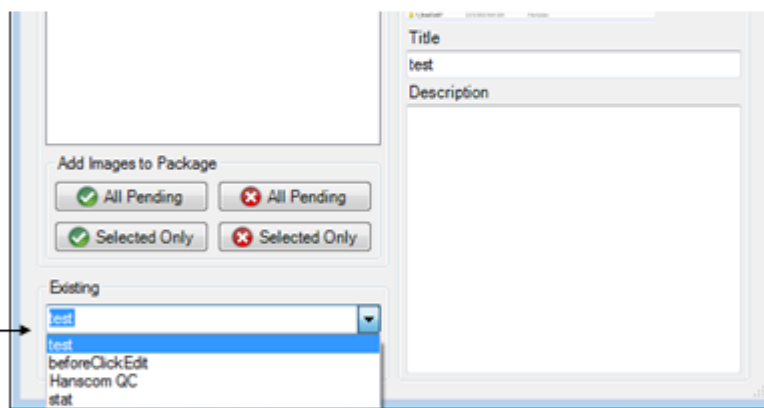


➤ Viewing/Deleting Images

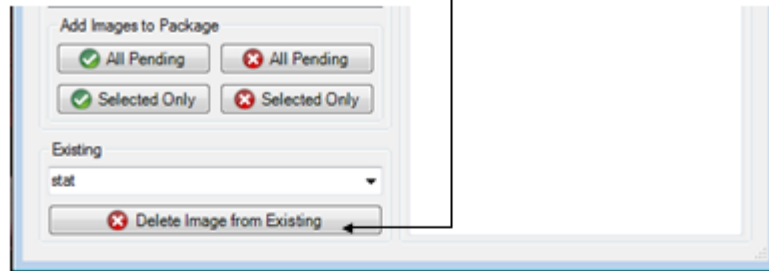
- “Images” button on toolbar will display total image count for selected node in navigation tree
- Click to open up image window



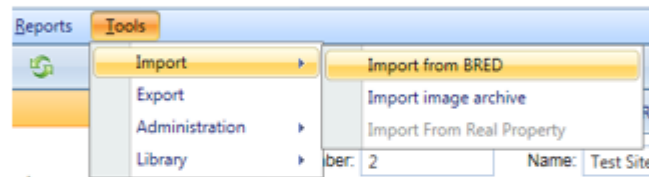
- Open the drop down list under the label “Existing” to view all linked images for the selected node on the navigation tree
- User can select/view from the drop down list



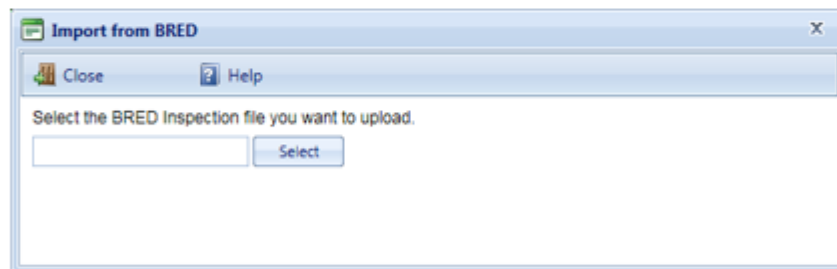
- Select “Delete Image from Existing” to erase selected image from the BRED file



- ❖ Importing BRED file with images back into BUILDER
  - After successfully logging into BUILDER select “Tools” on the top level tool bar then “Import from BRED”

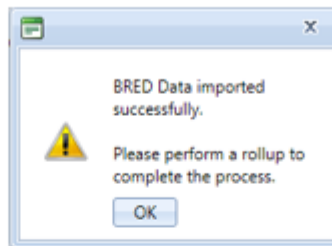


- The Import from BRED window will display, user should click “Select” and locate the BRED file





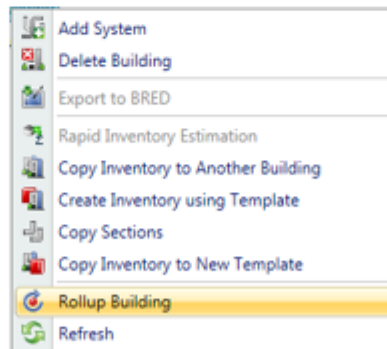
- After a successful import the user is prompted to click "OK" and perform a roll up. It is recommend that the user import the images file before running the roll up.



- Navigate back to the "Tools" drop down list and Select Import -> Import image archive
- Click the select button and locate the ~~bredpackage~~ file which contains the images of the BRED file



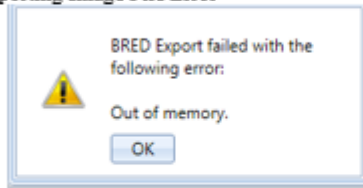
- After a successful import of the ~~bredpackage~~ file locate the building on the navigation tree
- Right click the building node that was just imported and select "Rollup Building"



- After the Rollup is completed the import process is finished
- Images should now be viewable on the BUILDER site

❖ Known Issues

➤ Exporting Image File Error



- If the user receives the above error message after trying to download the image file from BUILDER, there is a non-image attachment(PDF, Excel, etc.) somewhere in the exported building(s)
- Work Around: Export building(s) without images

**Attachments**

- [BRED3\\_3ImageLinkProcess.pdf \(345.74 KB\)](#)