



[Knowledgebase](#) > [BUILDER](#) > [Frequently Asked Questions](#) > [How to Unlock My Buildings](#)

## How to Unlock My Buildings

Paul Paisley - 2023-08-10 - [Comments \(0\)](#) - [Frequently Asked Questions](#)

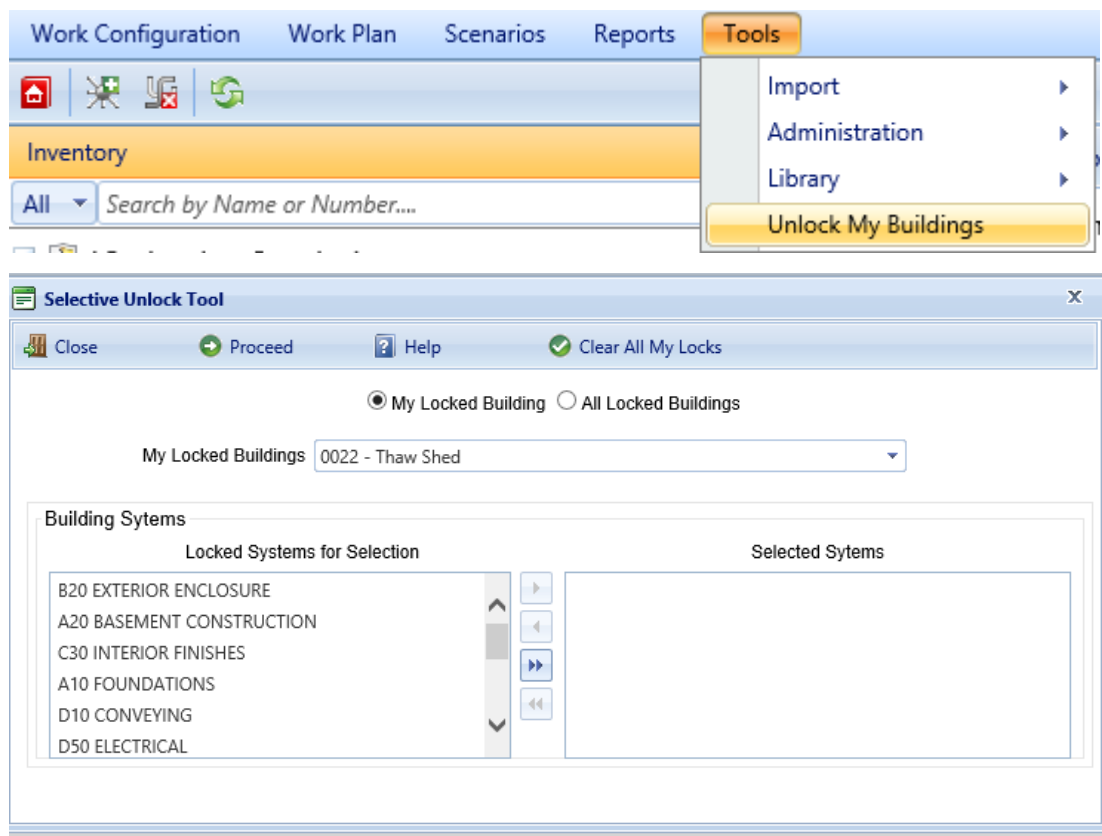
### Question:

How to unlock my buildings?

### Answer:

In BUILDER you may encounter a facility or system that cannot be edited or exported to BRED. These systems are designated by the lock icon in the upper left corner of the display pane, and indicate through an open lock or a closed lock the status of the selected system. If a facility is locked, you have the ability to run an Inspection Locks report (at the Complex or Site level) to see who has the facilities systems locked. *Please note that depending on your BUILDER instance, this Inspection Locks report might not be available so you will need to see what other reports might show this same information.*

If you are the one who has locked the systems, and you no longer have the BRED file to upload and unlock the system, then you can unlock through the 'Selective Unlock Tool' under 'Tools' >> 'Unlock My Buildings'. To clear all your locks, simply select the 'Clear All My Locks' button and any systems you have locked will be unlocked. You can select certain buildings to unlock or you can unlock all buildings that you have locked. To unlock facilities that you have not locked, please contact SMS Support at [smssupport@erdc.dren.mil](mailto:smssupport@erdc.dren.mil) for assistance. When you contact SMS Support, please make sure to include as much information (RPUID, number, name, location) as possible.



- Tags
- [BRED](#)
- [Building](#)
- [Clear Locks](#)
- [Export](#)
- [Facility](#)
- [Gray](#)
- [Grey](#)
- [Inspection Locks](#)
- [Lock](#)
- [System](#)
- [Unlock](#)