



FY25 Q3 SMS Newsletter

2025-04-21 - Kori McGraw - [Comments \(0\)](#) - [SMS Newsletter](#)



SMS NEWSLETTER

Q3 FY25

SMS UPDATES

SMS SUMMIT MOVES TO VIRTUAL

The SMS Summit will be held virtually this year on 9 July 2025. Subscribe to [SMS News](#) to receive updates regarding registration and event agenda.

ESMS SANDBOXES

Sandbox Environments are now available for testing and API development. Contact our Helpdesk to learn more.

SMS UPDATES.....	1
ESMS ATO	1
ESMS ONBOARDING ..	2
VTIME MILESTONE	3
FY25 COST BOOK	4
MG VISITS SMS	4

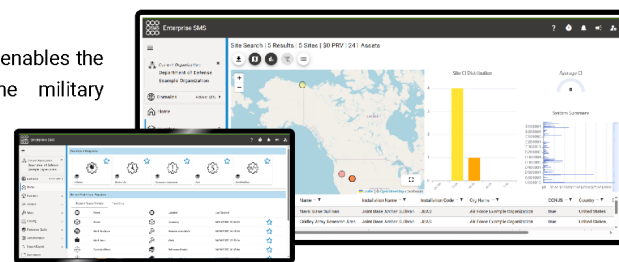
ESMS GETS THE GREEN LIGHT

On 20 February 2025, the Authority to Operate (ATO) was issued to the Deputy Chief of Staff, G-9 (Installations) for the Enterprise Sustainment Management System (ESMS). ESMS is an integrated web-based software platform for the DoD that utilizes an engineered process for asset lifecycle management (encompasses standardized facility condition assessments, identification and forecasting of investment requirements and consequence / trade-off analysis).

DoD information systems must follow the strict rules and guidelines laid out in DoD's Risk Management Framework (RMF). These rules include best business practices by Army Regulations AR 25 -1 and AR 25 -2 as well as the National Institute of Standards and Technology (NIST) guidance to provide a secure application and development environment. The issuance of an ATO for ESMS is an assurance that we have met the RMF standards necessary to begin hosting a production ESMS instance.

This is a critical milestone for DoD as this now enables the ESMS application to be delivered to the military departments and agency stakeholders. The transition from the legacy application (BUILDER Sustainment Management System - SMS) to the new enterprise level

(Continued on page 2)



[SMS Helpdesk](#)
[SMS Website](#)

We'd love your feedback!
[Contact us](#) to let us know what you want to see in the next newsletter.



(Continued from page 1)

(Enterprise – SMS) application will be a phased approach that begins with migrating data into a staging environment to allow for all stakeholders to ensure data quality and initial functionality as we transition from the legacy BUILDER SMS application to ESMS.

ESMS CUSTOMER MIGRATION AND ONBOARDING

The migration and onboarding process for each service and agency will include a customized schedule that involves three (3) phases: Intake, Staging, and Production.

INTAKE	Includes steps required in preparation of the migration into the ESMS staging environment. For example, this includes review of the inventory data (data quality in BUILDER, RPAD / BUILDER review, etc.), identification of pilot installations and identification of your organization's key stakeholders (at echelon as applicable).		
	Initiate Request <ul style="list-style-type: none">• Written Request• Kickoff Meeting	Submit Onboarding Packet <ul style="list-style-type: none">• Migration Process Overview• Data Migration Review POCs / Roles Defined	Packet Approval <ul style="list-style-type: none">• Approval on Onboarding Packet Finalized
STAGING	Includes training, functional testing for the pilot installations in the staging environment and overall QA/QC for all installations within the service or agency.		
	Prepare Staging Process <ul style="list-style-type: none">• Select Pilot Installations (if applicable)• Reference Data Review & Validation	Builder Snapshot Migration <ul style="list-style-type: none">• BUILDER Snapshot Migration• Stakeholder BUILDER Snapshot Validation• Stakeholder Snapshot Validation - Field Application• Entire Portfolio Migration• Entire Portfolio Validation• Customer Approval & Finalize Production Timeline	Training <ul style="list-style-type: none">• Admin Training• User Training for Select Roles
PRODUCTION	Includes migrating all installations (at a pace determined by your service / agency) to the cArmy environment. After a final QA/QC is conducted for the installation(s), then the BUILDER instance will be locked (but still visible) and the organization will begin using ESMS exclusively for Buildings assessments.		
	Production Migration <ul style="list-style-type: none">• ESMS Migration and Internal Validation	Production Validation <ul style="list-style-type: none">• Stakeholder Validation• Stakeholder Approval• Use ESMS Exclusively	Account Configuration <ul style="list-style-type: none">• Finalize Configuration

(Continued on page 3)

[SMS Helpdesk](#)

[SMS Website](#)

We'd love your feedback!

[Contact us](#) to let us know what you want to see in the next newsletter.



WHAT YOU CAN DO

Get ahead of potential migration issues by ensuring data quality issues in BUILDER are corrected. SMS has identified 10 critical fields that need to be correct in service and agency BUILDER instances or their accountable property system of record (APSR).

Null or incorrect critical fields associated with an RPUID can cause the record to be excluded or incorrectly aligned during migration. Questions regarding the ESMS onboarding process can be directed to service or agency program managers.

CRITICAL FIELDS	
RPUID	PRV
Unit of Measure	Operational Status ★
Unit of Measure Quantity	Interest Type ★
Category Code	RPA Type ★
Built Date	Sustaining Org ★
★ Individuals without visibility into these critical fields should contact your real property Subject Matter Expert (SME) or the SMS Helpdesk for assistance.	

ARMY MOVES TOWARD IMPLEMENTATION OF VTIME

The U.S. Army Engineering Research and Development Center ERDC recently reached a milestone for the Virtual Toolbox for Installation Mission Effectiveness (VTIME). On 10 February 2025, the Assistant Secretary of the Army (ASA) for Acquisition, Logistics and Technology (ALT) designated Program Executive Office (PEO) Enterprise as the Office of Primary Responsibility for VTIME, a program sponsored by ASA for Installations, Energy and Environment (IE&E), prototyped by ERDC and managed under the Sustainment Management System Technical Center of Expertise (SMS-TCX).

VTIME provides integrated installation planning to improve quality, efficiency, pace of planning, facility investment analytics, and real-time data-informed decision-making to help Army installations make data-informed decisions more intelligently and quickly based on an installation common operating picture. SMS BUILDER is one of the central authoritative data sources that enable these new planning and decision support tools. PEO Enterprise is the premier enterprise application and service provider advancing the Army's mission to fight and win which oversees other Army systems like Army Data Platform (VANTAGE). ERDC will work with PEO Enterprise as they develop their acquisition shaping panel and work collaboratively with the functional sponsor (ASA-IE&E) to identify roles and responsibilities, manpower, and other funding commitments.

[SMS Helpdesk](#)

[SMS Website](#)

We'd love your feedback!

[Contact us](#) to let us know what you want to see in the next newsletter.



FY25 COST BOOK

The most recent version of the FY25 Cost Book is undergoing revisions to enhance integration and will become available soon. Reach out to the SMS Helpdesk to request a walkthrough of the revisions or to have the FY25 Cost Book imported into BUILDER.

Your opinion matters. Contact the SMS Helpdesk to get involved with the FY25 Cost Book revision process.

SMS GETS MAJOR RECOGNITION

In a show of recognition, Major General Kimberly M. Colloton visited the SMS Branch in February following the Authority to Operate (ATO) issued for ESMS. MG Colloton applauded the team's innovation and resilience that lead to the ATO. The visit included a conversation with CERL and ERDC leadership about the broader impact of ESMS for DoD agencies and a recognition of two team members, Eric Mixon and Paisley Mahern, for their particular effort in the milestone achievement.



[SMS Helpdesk](#)
[SMS Website](#)

We'd love your feedback!
[Contact us](#) to let us know what you want to see in the next newsletter.



Attachments

- [FY25 Q3.pdf \[1.64 MB\]](#)